



2024 Spring Series, Summer Series, Level Series, Tonini Series,

Organized by J/24 Fleet 43, Casco Bay, Maine

Sailing Instructions

Updated 5/13/2024

J/24 Fleet 43 Boat Owner Checklist

- Register for Fleet 43 (<https://www.j24fleet43.org/>)
- Register for U.S. J/24 Class Association (<http://j24usa.com/>)
- Procure Liability Insurance and Email Proof to R.O. (WFinHadlock@gmail.com)
- Validate Measurement Certificate and Optional Equipment List
- Sign up for Race Committee (<https://www.j24fleet43.org/wednesday-night-race-series>)



1. RULES

- 1.1. These J24 Class series will be governed by the rules as defined in *The Racing Rules of Sailing for 2021-2024 (RRS)*.
- 1.2. Appendix T (Arbitration) will apply.
- 1.3. Rule V1 (Alternative Penalties) of Appendix V will apply.
- 1.4. RRS 35 and Appendix A are modified – see TIME LIMITS.
- 1.5. RRS Appendix A is modified – see SCORING.
- 1.6. SI's will be updated for Fall Series if needed.

2. CHANGES TO SAILING INSTRUCTIONS

- 2.1. Any changes to these instructions will be posted on the Fleet 43 website in conjunction with an email to all Fleet members prior to their taking effect.

3. SAFETY

- 3.1. The J24 Class Rules contain a list of required items, many safety related. Boats are reminded that these items are **required/mandatory**.
- 3.2. The **wearing** of PFDs is strongly recommended, particularly for crew on the deck, as well as for all crew during the early season when the ocean water is frigid.
- 3.3. The RC can use RRS Rule 40 by using the Y flag to require PFDs

4. SIGNALS MADE ASHORE

- 4.1. Signals made ashore will be displayed from the RC Boat Lindsay Lord while at the dock, or the yardarm of the PYC dock flagpole.

5. SCHEDULE AND CLASS FLAGS

- 5.1. The scheduled time of the warning signal for the first start of the Wednesday Night Racing will be 1800 hours
- 5.2. The class flag (used for racing starts) is the J24 logo on a contrasting background.
- 5.3. The class flag used in practice starts will be the '0' (zero) flag.
- 5.4. Race Committee may perform the required practice start up to 10 minutes before the scheduled time of the warning signal of the first start.
- 5.5. If there is a postponement, a practice start is not required.

6. RACING AREA

- 6.1. Courses will be set SE or SW of Clapboard Island in areas marked A, B or C on the attached Chart in APPENDIX "B". The Race Committee boat shall hoist the A, B or C lettered flags prior to leaving the dock and announcing on VHF radio to which area they will be setting up the race course.

7. RADIO COMMUNICATIONS

- 7.1. Radio communications between the Race Committee and the fleet will be done over VHF channel 69.

8. COURSES AND MARKS

- 8.1. The Race Committee will display a windward/leeward drop mark course ("WX", "WX2", "WL" or "WL2", as designated in APPENDIX "A" - Graphic Course Layout),



or may display a course proceeding around government marks. The government mark list will be the same list used for the Portland Yacht Club Thursday Night Series and is available on the PYC website or in hard copy form in the clubhouse.

- 8.2. The Race Committee may display the compass heading to the first mark.
- 8.3. Boats may pass through the Start / Finish Line on the way to the next mark.
- 8.4. The distance from the starting line to the first weather mark will be between 0.7 and 0.9 Nautical Miles.

9. CHECK-IN

- 9.1. Prior to the Warning for the first race of each evening, every boat shall sail by the stern of the Committee Boat and hail its name and number of crew. Check-In for any race after the first is required only for boats that did not sail the first race.

10. STARTING LINE

- 10.1. The starting line will be between the orange or yellow flag on the Race Committee boat and the nearby orange or yellow mark.

11. STARTING

- 11.1. The Starting System of RSS 26 will be used.
- 11.2. The Race Committee is required to run one practice start before the start of the first race unless there has been a postponement. The Race Committee is encouraged to inform the fleet via VHF radio that the start is a practice start, as well as using the required practice start class flag, which is the "0" Flag.

12. FINISHING

- 12.1. The finishing line will be between the orange or yellow flag on the committee boat and the nearby mark. The race committee may choose to place a separate finish mark between the start mark and the committee boat.

13. PENALTIES

- 13.1. Rule V1 (Alternative Penalties) of Appendix V will apply.

14. TIME LIMITS

- 14.1. Races must have a first boat finished by 15 minutes after the time of sunset (of the date of the race) in Falmouth, Maine.
- 14.2. The Race Committee may score all boats more than 15 minutes behind the first place boat a Time Limit Exceeded (TLE), a score equal to the next finish position that has not yet been scored in that race.
- 14.3. If a boat in last place is delaying the next start, the Race Committee may score that boat the points equal to last place and start a new race without waiting for that boat to finish.

15. NUMBER OF RACES PER WEDNESDAY NIGHT



- 15.1. The Race Committee will endeavor to run two or more quality races per Wednesday evening, observing the time limits outlined in these SI's and the weather conditions of the night.
 - 15.1.1. In ideal conditions, a quality race should consist of 3 or more legs, with the total race lasting around 40 minutes.
 - 15.1.2. See racing packet for recommended course lengths and course shortening procedures.

16. PROTESTS

- 16.1. Appendix T will apply, all incidents will go to Arbitration first before a formal protest hearing, the arbiter will be chosen by the Fleet 43 Race Officer
- 16.2. Immediately after finishing the race, any boats intending to file a protest must notify the Race Committee and identify the boats being protested.
- 16.3. Completed protest forms must be delivered to the Race Committee within 30 minutes of the arrival of the Race Committee back to the PYC dock. The Race Committee will post their time of arrival on the PYC oceanside bulletin board if they were notified of an intent to protest while on the water per the preceding paragraph.

17. SCORING

- 17.1. A team will not be scored until it has fulfilled all eligibility requirements. If a boat has participated in race(s) before meeting eligibility requirements, those races will be scored DNC after eligibility requirements have been met.
 - 17.2. Series scoring will be based on the race results of the single J24 hull number provided at registration.
 - 17.3. For the Summer, Level and Tonini Series, a minimum of three races are required to be completed to constitute a series.
 - 17.4. A DNC score will be the number of boats registered for the series plus one. Late registrations will change this number retroactively.
 - 17.5. There must be at least three J/24 Fleet 43 member boats that start a race for it to be counted towards these J/24 Fleet 43 series.
 - 17.6. If the number of boats registered is less or equal to the number of scheduled nights of racing, each team/boat will be required to perform race committee duties for a J24 Wednesday night's racing with at least three people participating. That team/boat will receive an OOD score that is equal to the series average of their non-excluded points of the series in which each race is scored. Failure to perform your assigned or volunteered-for time will result in disqualification from all series. If due to unforeseen circumstances you need to switch days you are responsible for finding another boat/team to switch with and if that team doesn't show then both teams will be disqualified.
- 17.7. Spring Series**
- 17.7.1. RRS Appendix A Low Point System will be amended such that 25% (rounded down to the nearest whole number) of completed races of the series, of a boat's worst scores, will not be counted.

17.8. Summer Series



- 17.8.1. RRS Appendix A Low Point System will be amended such that 25% (rounded down to the nearest whole number) of completed races of the series, of a boat's worst scores, will not be counted.

17.9. Tonini Series

- 17.9.1. RRS Appendix A Low Point System will be amended such that 20% (rounded down to the nearest whole number) of completed races of the series, of a boat's worst scores, will not be counted.

17.10. Level Series

- 17.10.1. Each team will be provided a handicap (like in golf) based on their Tonini results in previous racing over the last three years. To calculate the handicap each boat's average Tonini score over the last three years will be used to calculate a percentage difference between the top Tonini score and their own Tonini score. Therefore, if the best average score is 2 and your average scores are 3 then your handicap will be .66. The handicap will be applied to the 2020 Tonini Series net scores, therefore if at the end of the season your total net points were 100 for the 2019 Tonini Series and your Level handicap was .66 then $100 \times .66 =$ Your new Level net score of 66. The boat with the lowest total wins the level series. The idea is if everyone sailed exactly to their average then the final scores would be tied. However, we know that this doesn't happen based on effort each team puts in over time. Boats will be placed at 7th for years they did not participate.

18. DISCLAIMER OF LIABILITY

- 18.1. Competitors participate in the regatta entirely at their own risk. RRS 3 states: "The responsibility for a boat's decision to participate in a race or to continue to race is hers alone." By participating in this event each competitor agrees and acknowledges that sailing is a potentially dangerous activity with inherent risks. These risks include strong winds and rough seas, sudden changes in weather, failure of equipment, boat handling errors, poor seamanship by other boats, loss of balance on an unstable platform and fatigue resulting in increased risk of injury. Inherent in the sport of sailing is the risk of permanent, catastrophic injury or death by drowning, trauma, hypothermia or other causes.

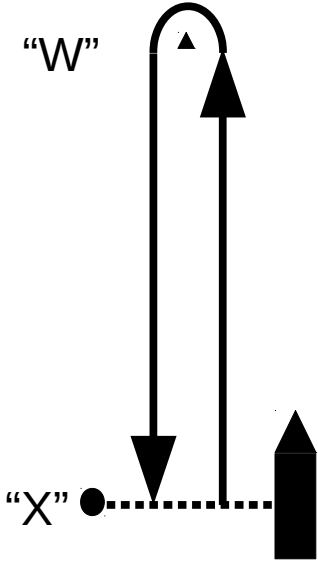
19. INSURANCE

- 19.1. Each participating boat must be insured with valid third-party liability insurance with a minimum cover of \$300,000 per incident or the equivalent.

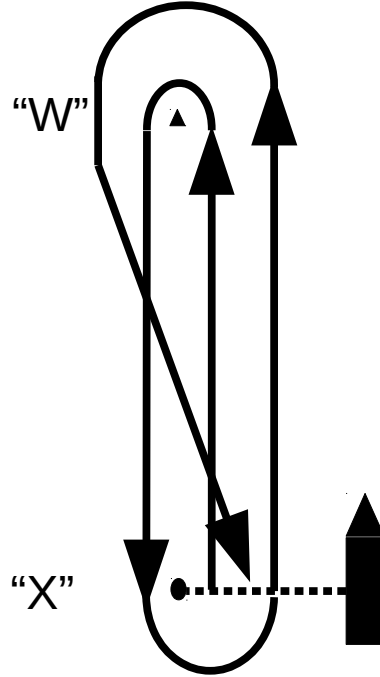


APPENDIX "A" - GRAPHIC COURSE LAYOUT

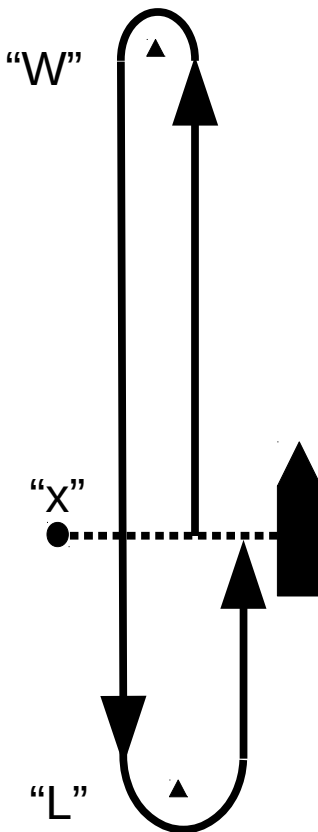
Course "WX"



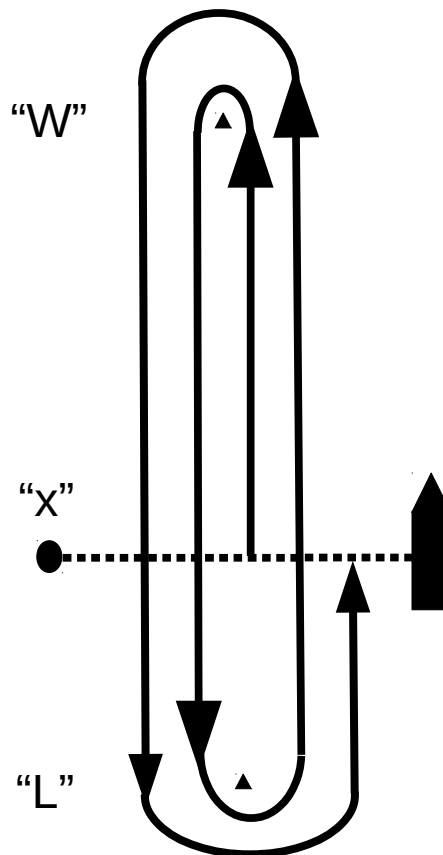
Course "WX2"



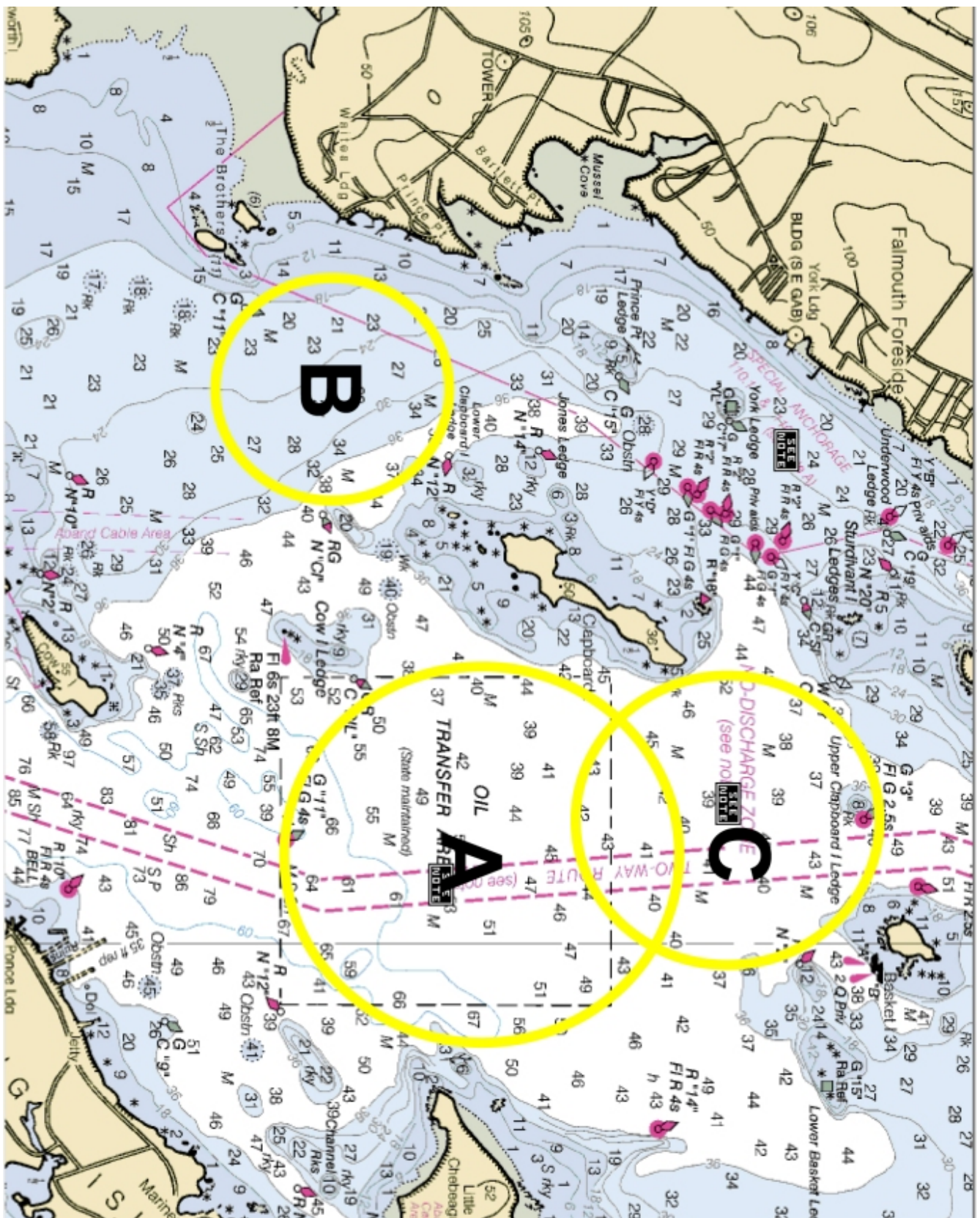
Course "WL"



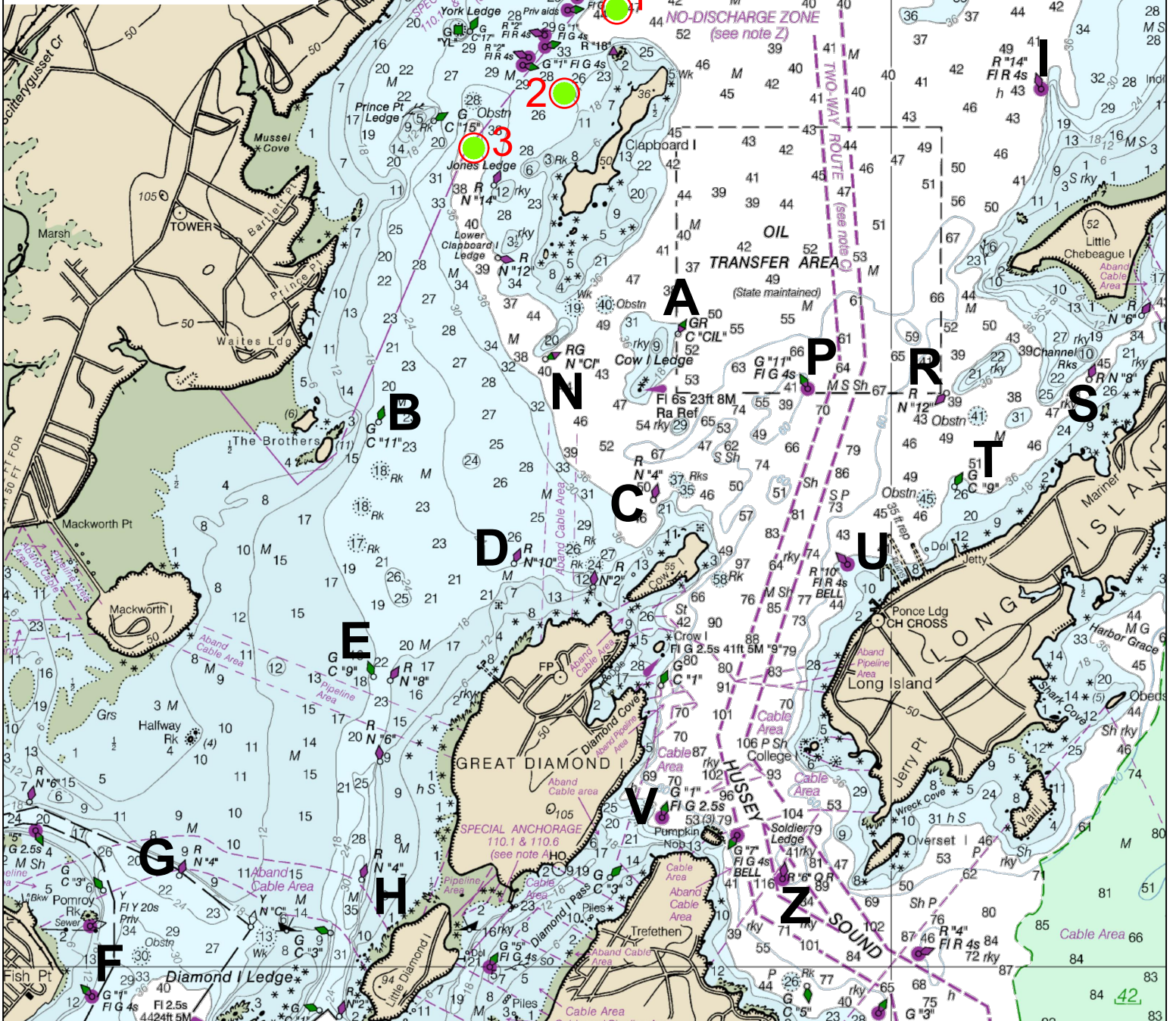
Course "WL2"



APPENDIX "B" – Race area to be communicated to fleet by RC



PORTLAND YACHT CLUB RACING MARKS



A	GR C "CIL"	N	Cow Is. Ledge	M	GR C "SI"	S	Sturdivant Is. Ledge
B	C"11"	E	The Brothers	N	RG N "CI"	W	Cow Is. Ledge
C	N"4"	NW	Cow Is.	P	G"11" FI G 4s	E	Cow Is. Ledge
D	N"10"	NW	Great Diamond Is.	R	N"12"	W	Channel Rocks
E	C"9"	W	Great Diamond Is.	S	N "8"	W	Long Is.
F	G"1" FI G 4s	Fish	Point	T	C"9"	W	Ponce Landing
G	N"4"	NE	Pomroy Rk	U	R"10" FI Bell	W	Pumpkin Knob
H	N"4"	NW	Little Diamond Is.	V	G"1" FIG2.5s	W	Windward Mark
I	R"14" FI R 4s	W	Indian Pt. Cheb. Is.	W	Drop	X	Drop
J	N"2"	SE	Basket Is.	Z	R"6" QR		Soldier Ledge, Hussey
K	G"3" FI G 2.5s	SW	Basket Is.				
L	Drop	Leeward	Mark				

Thursday Night Starting Areas:

Mark selection is by a committee of Race Officers and volunteers from Centerboard and Portland Yacht Clubs. Mark List compiled by T. Tolford. Graphics by J. Cady. Publish date: Spring 2020.